

# Optional Alternate Trigger

PLRB-Pro Controller, PL910-1 3C & Alternate Trigger

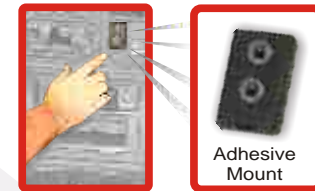
Flex Switch™ is coded using the same process as Key Fobs described in User Manual code learning section.

Mounting Flex Switch™(RS1) is done using the 2 Fasteners through mounting holes. Carefully select the area best suited for its' placement.

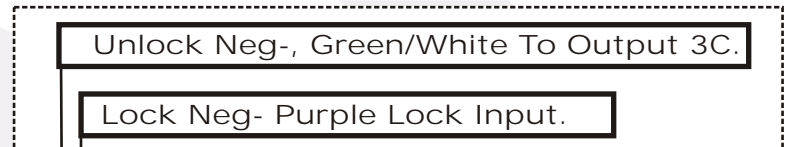
FLEX SWITCH I™



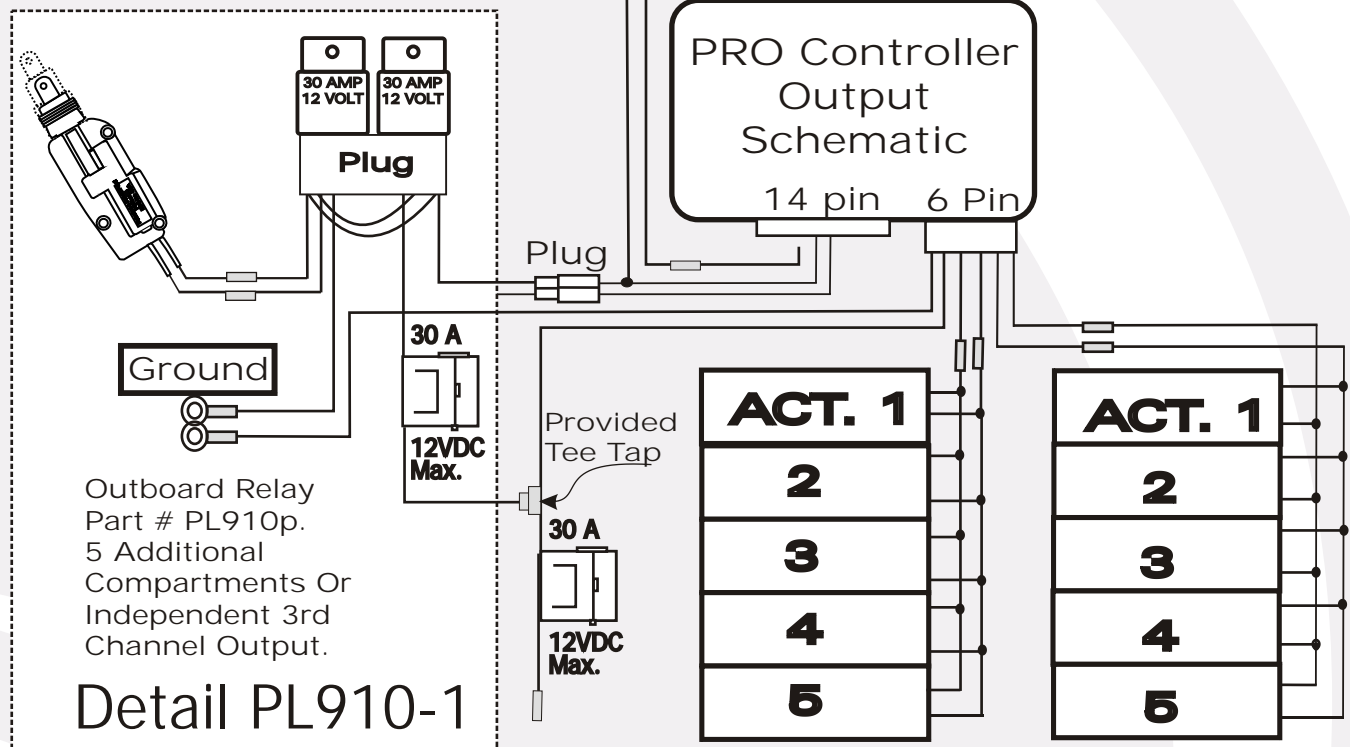
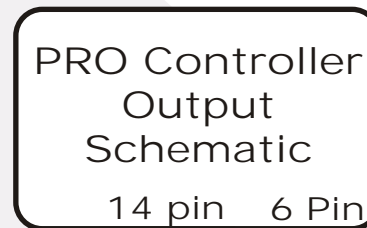
FLEX SWITCH II™



## Separating Third ( 3C ) By Alternate Trigger



Pat. Pend.



Outboard Relay  
 Part # PL910p.  
 5 Additional  
 Compartments Or  
 Independent 3rd  
 Channel Output.

### Detail PL910-1

- 1 (3C On) Third Channel Output First To Unlock
- 2 Second To Lock Left Baggage & Compartment
- 3 Third To Lock Right Baggage & Compartment

# Flex Switch II™

Wireless Solution for Locking

**NEW**

## FLEX SWITCH II™

Wireless Solution For Locking  
Pat. Pend.



### *New Features*

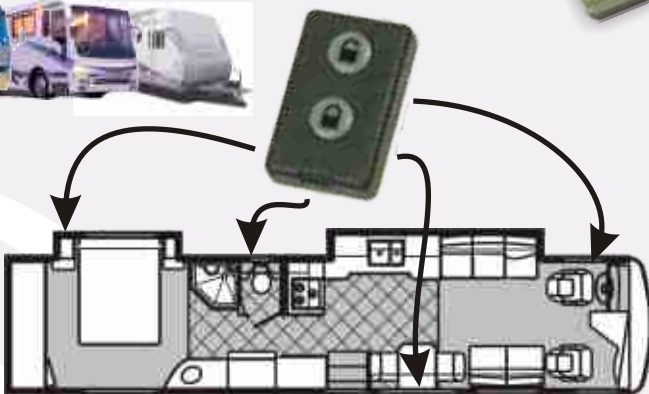
- **Compact In Size**  
Smaller profile to fit where you want it, when you need it.
- **Stylish**  
Easily painted to match any color trim or decor.
- **Installs Easily**  
No drilling or screws. Flex Switch II mounts easily on most surfaces, including granite, with its' unique adhesive backing.



*"Where You Want It, When You Need It."*



Pat. Pending



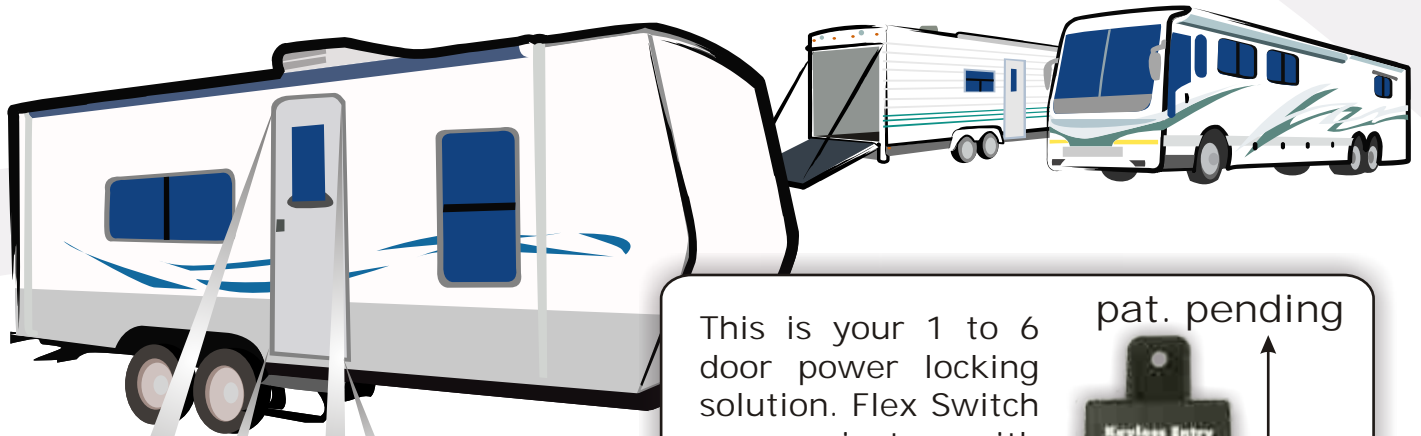
Motor Coach Floor Plan

Flex Switch II™  
Pat. Pend.

Wireless Flex Switch can be easily installed anywhere. "Where You Want It, When You Need It." Works with HDC Inc. Keyless Entry Controller

# RC35a Easy Add pat. pending

Keyless Entry Relay



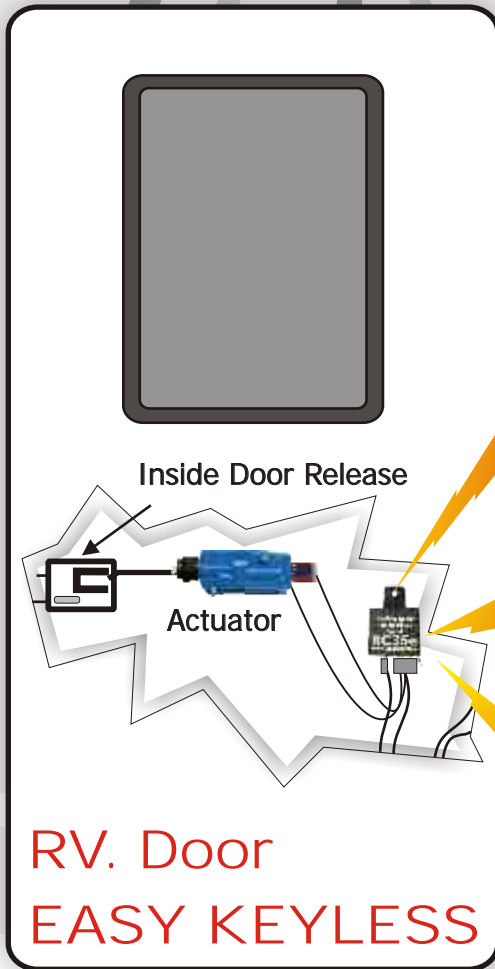
This is your 1 to 6 door power locking solution. Flex Switch communicates with this new keyless entry controller making wiring a thing of the past.

pat. pending



3.5"

2.25"



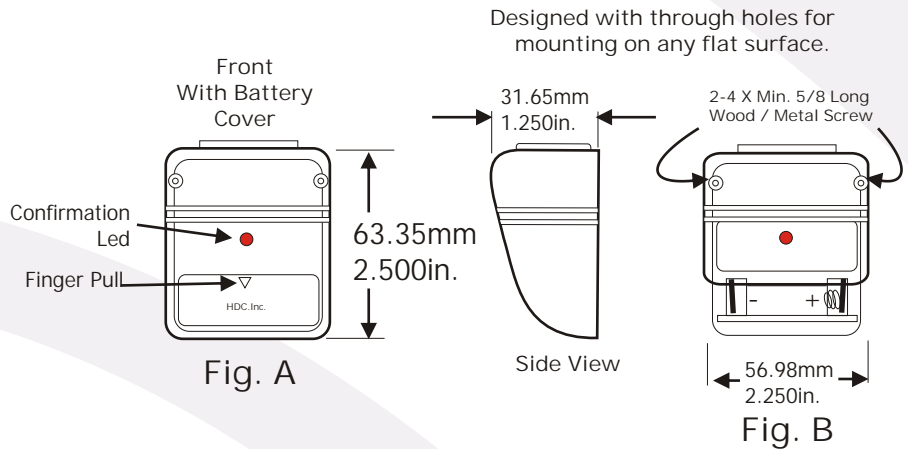
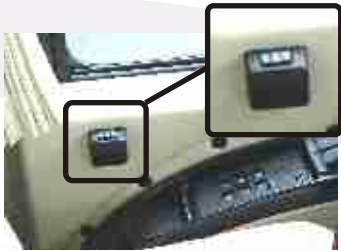
- Communication with aftermarket and factory power locking systems.
- On board relays alone directly power all actuators.
- Key fobs can be easily programmed and added.
- Hardwired switches can be added.
- Timed output, positive/negative.
- Six door capable, slave relay pack increases power locking even more.
- Weather Resistant allows more flexibility in installation.
- Combination of 10 fobs and Flex Switches can be added to memory.

Keyless Entry power door lock easy add. All inclusive door mounted system.

Optional

## Flex Switch I (RS1)

Mounting Flex Switch (RS1) is done using the 2 Fasteners through mounting holes. Carefully select the area best suited for its placement.



Flex Switch

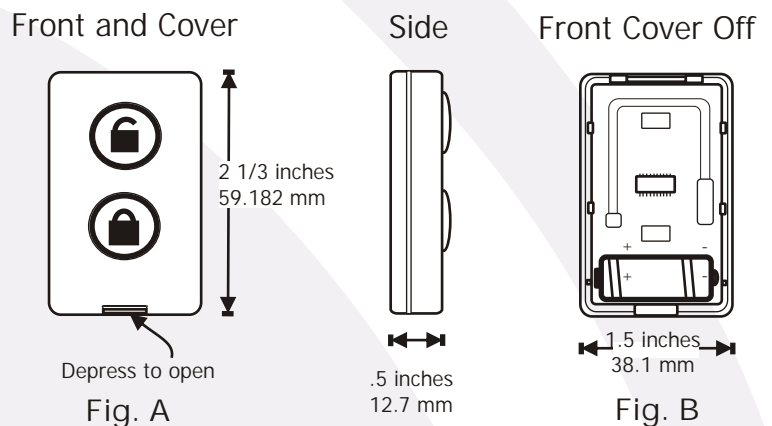
is coded using the same process as Key Fobs described in User Manual code learning section.

## Flex Switch II (RS2)

Replacing the Flex Switch II battery the cover must be removed. Using only a fingernail or paper clip, depress the tab on the bottom of the flex switch. Cover will hinge at the top revealing the inside components. Replacement batteries are 12v part # GP23A, CN23A, EL12 and Vr22 or similar class battery.

Replacement battery must be installed as shown in Fig B. Its orientation is specific to +- polarities clearly marked.

Replace cover and test.



The battery mates to the contacts and cradles inside the bezel. Battery held in place only by cover and contacts.

## T-25 Transmitter

To replace the T-25 Key Fob battery (Fig D.), the shell of the transmitter must be removed. Pry between the depression around the shell and separate the fob into 2 pieces exposing the battery as shown in Fig. D. Replacement batteries are 12v part # GP23A, CN23A, EL12 and VR22 or similar class battery.

Replacement battery must be installed as shown in Fig. D. Its orientation is specific to - + polarities clearly marked. Replace cover and test.

